



INTELLIGENT DISINFECTION

Accessories

for KEN IQ Life Science Series

Clean, Lean & Green

A large, light blue wireframe globe is positioned on the left side of the image, partially overlapping the text. It features a grid of latitude and longitude lines.

Intelligent solutions

- The future of effective disinfection



Equipment for KEN IQ3, IQ4, IQ5 and IQ6

The large range of flexible loading equipment available for KEN IQ series is designed to meet the requirements for cleaning and disinfecting glassware in a modern laboratory.

The machine is the obvious choice for washing, disinfection and drying in laboratories and pharmaceutical industry. Find all the available loading equipment for KEN IQ LAB series in this catalogue.

Combine the various loading equipment to suit your specific need. The combination of loading equipment makes it possible to wash and disinfect all types of glassware and equipment.

For further information about customized special solutions, please contact KEN.

IQ3

Loading shelves	PAGE 4-5
Distributors	PAGE 6-9
Support for other accessories	PAGE 10-11
Support for flasks	PAGE 12-13
Other accessories	PAGE 14-15

IQ4

Loading racks	PAGE 16-17
Modules for base rack	PAGE 18-19
Distributors	PAGE 20-21
Support for other accessories	PAGE 22-23
Support for flasks	PAGE 24-25
Other accessories	PAGE 26-27

IQ5

Loading racks	PAGE 28-29
Modules for base rack	PAGE 30-33
Distributors	PAGE 34-35
Support for other accessories	PAGE 36-37
Support for flasks	PAGE 38-39
Other accessories	PAGE 40-41

IQ6

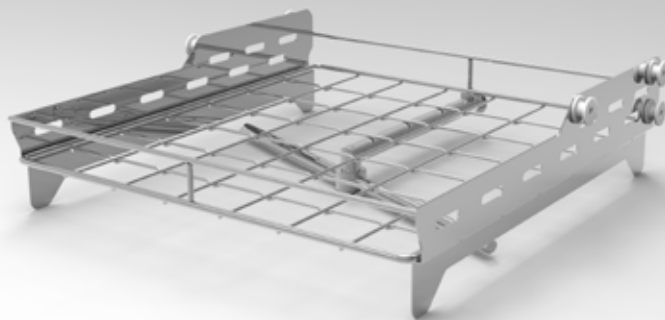
Loading racks	PAGE 42-43
Modules for base rack	PAGE 44-45
Distributors	PAGE 46-47
Support for other accessories	PAGE 48-49
Support for flasks	PAGE 50-51
Other accessories	PAGE 52-53

TROLLEYS

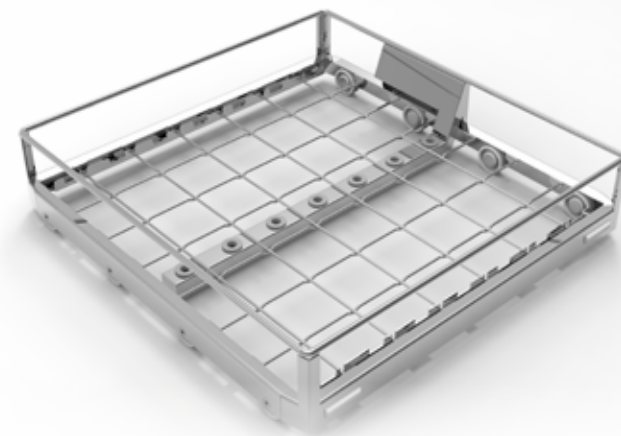
Manual loading trolley	PAGE 54-55
------------------------	------------



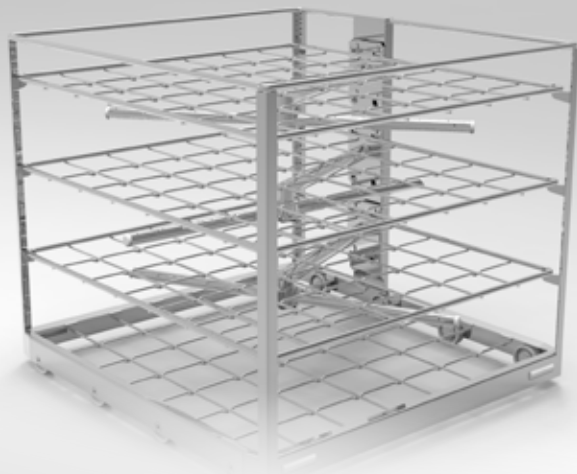
BASIC RACK
Basic lower level rack
ref. 2938093



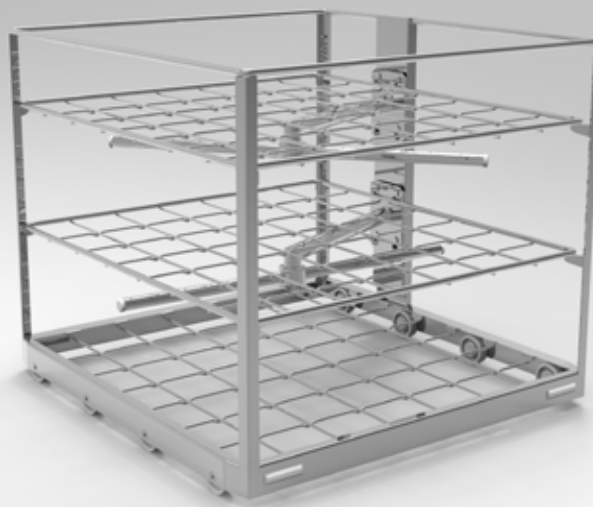
BASIC RACK
Basic top level shelf including washing arm
ref. 2938012



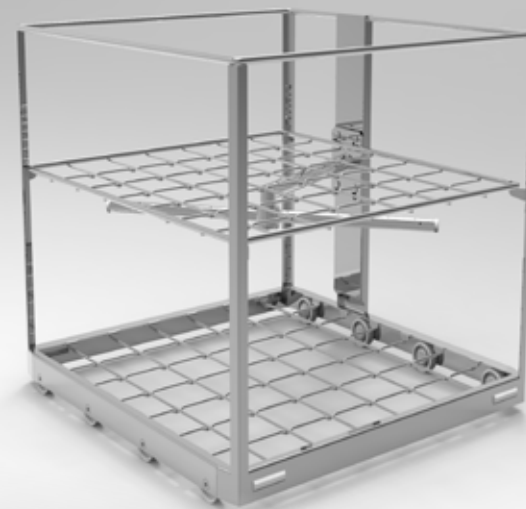
BASIC RACK
Basic lower level rack for distributors
ref. 2938113



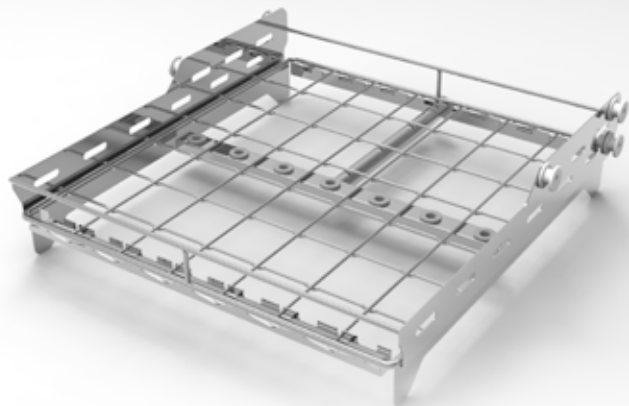
FLEXIBLE RACK
for washing in 4 levels
ref. 2938074



FLEXIBLE RACK
for washing in 3 levels
ref. 2938069

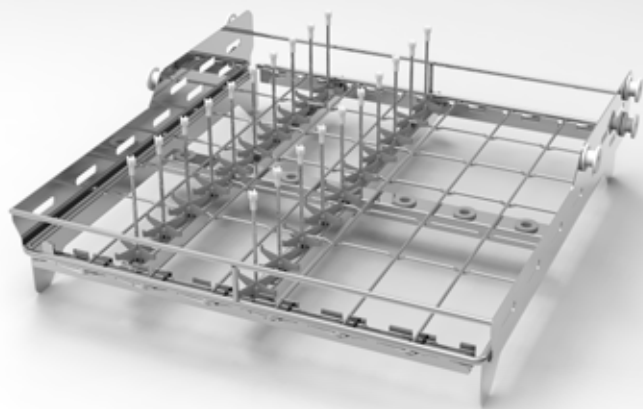


FLEXIBLE RACK
for washing in 2 levels
ref. 2938090



BASIC RACK

Basic top level rack for distributors
ref. 2938114



FLEXI RACK

ref. 2938114/2938122

IQ3 LOADING SHELVES

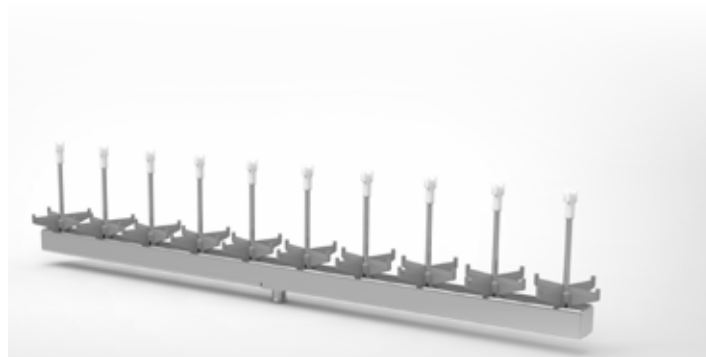
The Loading systems for KEN IQ3 LAB is designed in stainless steel. It is normally configured for the standard shelf system "Flexi Rack" for top and bottom, but a machine for racks is also available.

The IQ3 is designed to wash high items in 1 level or smaller and medium sized items in 2 levels. The Flexi System makes it easy to equip the machine with the right accessories for any kind of laboratory wash load. Every injector is connected not only to the internal water pump system for washing but also to the hot air blower motor, so every piece of glassware or equipment will be washed and dried as well from the inside as the outside. There is also a rack machine available for baskets.

IQ3 DISTRIBUTORS

The distributors are designed to give optimum flexibility. It comes in two types. Either with fixed spikes or with threaded connections for holders. This gives the possibility to optimize the flexibility. The shelves can be equipped with both large systems for large volume flasks and at the same time have other distributors with a lot of spikes for small glassware. The flexibility makes the most obvious appearance when you need to adapt for a different lot of goods. Unlike rack systems you only change or apply one or maybe two distributors and your interior rack design changes completely.

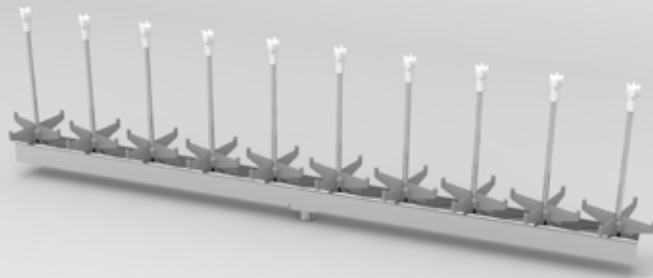
This procedure is easily done and without heavy lifting of any kind. Furthermore the laboratory saves a lot of storage space, as the rack design is so flexible. Thus you only need one shelf and a few extra distributors to be able to accommodate a great variety of laboratory glassware and other equipment.



DISTRIBUTOR UNIT

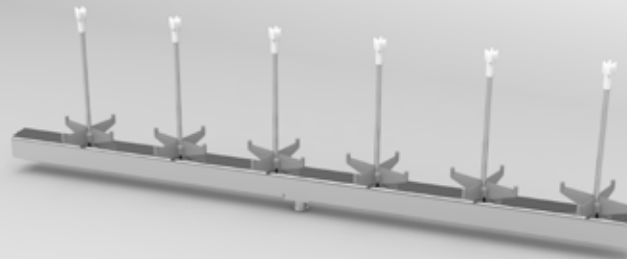
10 x 60 mm. fixed injectors

Distributor unit with 10 x 60 mm.
fixed injectors. Injector position
spread: 52 mm.
ref. 2938121



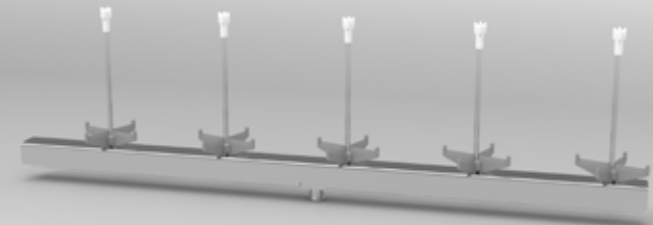
DISTRIBUTOR UNIT
10 x 95 mm. fixed injectors

Distributor unit with 10 x 95 mm.
fixed injectors. Injector position
spread: 52 mm.
ref. 2938122



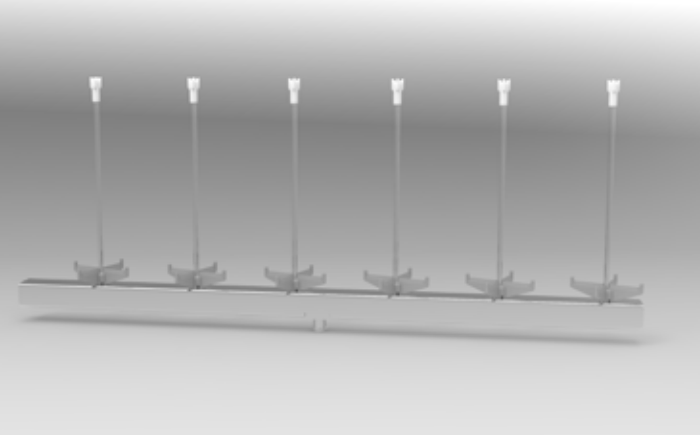
DISTRIBUTOR UNIT
6 x 95 mm. fixed injectors

Distributor unit with 6 x 95 mm.
fixed injectors. Injector position
spread: 81 mm.
ref. 2938123



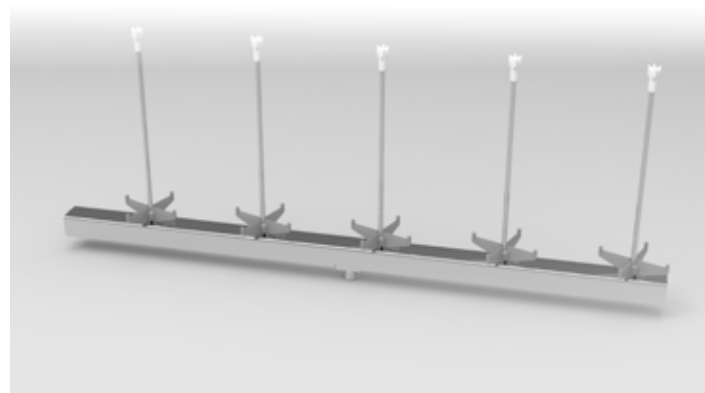
DISTRIBUTOR UNIT
5 x 95 mm. fixed injectors

Distributor unit with 5 x 95 mm.
fixed injectors. Injector position
spread: 99,3 mm.
ref. 2938124



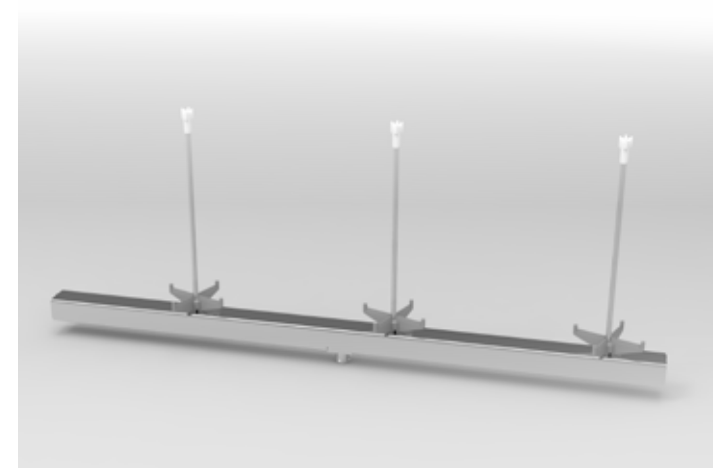
DISTRIBUTOR UNIT
6 x 150 mm. fixed injectors

Distributor unit with 6 x 150 mm.
fixed injectors. Injector position
spread: 81 mm.
ref. 2938125



DISTRIBUTOR UNIT
5 x 150 mm. fixed injectors

Distributor unit with 5 x 150 mm.
fixed injectors. Injector position
spread: 99,3 mm.
ref. 2938126



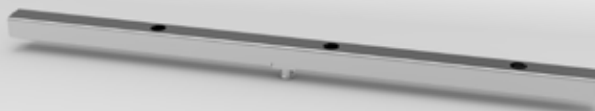
DISTRIBUTOR UNIT
3 x 150 mm. fixed injectors

Distributor unit with 3 x 150 mm.
fixed injectors. Injector position
spread: 165 mm.
ref. 2938127



DISTRIBUTOR UNIT
3 x threaded connections
165 mm distance

Distributor unit (excl. injectors):
3 x threaded connections.
Spread: 165 mm.
ref. 2938128



DISTRIBUTOR UNIT
3 x threaded connections
151 mm distance

Distributor unit (excl. injectors):
3 x threaded connections.
Spread: 151 mm.
ref. 2938129

IQ3 DISTRIBUTORS

The distributors are designed to give optimum flexibility. It comes in two types. Either with fixed spikes or with threaded connections for holders. This gives the possibility to optimize the flexibility. The shelves can be equipped with both large systems for large volume flasks and at the same time have other distributors with a lot of spikes for small glassware. The flexibility makes the most obvious appearance when you need to adapt for a different lot of goods. Unlike rack systems you only change or apply one or maybe two distributors and your interior rack design changes completely.

This procedure is easily done and without heavy lifting of any kind. Furthermore the laboratory saves a lot of storage space, as the rack design is so flexible. Thus you only need one shelf and a few extra distributors to be able to accommodate a great variety of laboratory glassware and other equipment.

IQ3 SUPPORT FOR OTHER ACCESSORIES

The jet spikes from KEN HYGIENE SYSTEMS are always delivered with nozzles. These nozzles serve several purposes. Among other purposes it serves to ensure that the water spreads correctly. Due to continued testing our R&D has developed a new nozzle that performs the perfect spread of water and also contributes with a support of mechanical power to the spray of water that contributes to the best cleaning result.

The nozzle also helps protect the glassware from damage. The spikes are made of stainless steel and the nozzle then shields the glassware from the steel. The nozzle is also designed in a way that creates space between the spike and the glass.



NOZZLE

Nozzle for Ø4 injectors (threaded).
ref. 2900897



NOZZLE

Nozzle for pipettes.
ref. 2900913



JET SPIKES Ø5

Jet spikes Ø5 x 200 mm. for threaded units. Nozzle (tip) Ø8. ref. 8300105



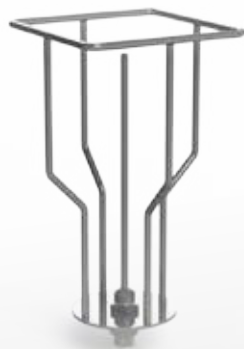
JET SPIKES Ø6

Jet spikes Ø6 x 270 mm. for threaded units. Nozzle (tip) Ø10. ref. 8300106



JET SPIKES Ø8

Jet spikes Ø8 x 360 mm for threaded units. Nozzle (tip) Ø13. ref. 8300107



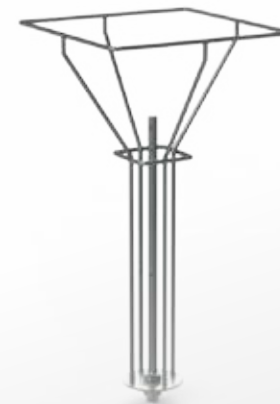
SUPPORT FOR FLASKS
500-1.000 ml.

Glassware adapter for threaded units. For e.g. Erlenmeyer 1.000 ml., Blue Cap 500-1.000 ml.
ref. 8300305



SUPPORT FOR FLASKS
5.000-10.000 ml.

Glassware adapter for threaded units. For large flasks 5.000 ml. - 10.000 ml.
ref. 8300310



SUPPORT FOR FLASKS
5.000 ml.

Glassware adapter for threaded units. For volumetric flasks 5.000 ml.
ref. 8300311



SUPPORT FOR FLASKS
500-2.000 ml.

Glassware adapter for threaded
For volumetric flasks 500 ml. -
2.000 ml. units.
ref. 8300312



SUPPORT FOR FLASKS
2.000-5.000 ml.

Glassware adapter for threaded For
Erlenmeyer 2.000 - 5.0000 ml.
ref. 8300313

IQ3 SUPPORT FOR FLASKS

If there is no space in between the glass and the spike there is a risk of clogging the spike. The design of the KEN Nozzle eliminates that risk.

KEN HYGIENE SYSTEMS has for several decades designed holders for laboratory glassware. This has been designed taking effectivity, safety and flexibility into account. The holder systems are fitted with the threaded connection to the threaded distributors. The new system for the IQ series is designed with the same threaded piece as our previous models, which means that your existing KEN holders can be placed directly in the new IQ machines. This is also the case with customized holder systems from KEN HYGIENE SYSTEMS .



IQ3 - OTHER ACCESSORIES

KEN is always developing and adapting to the world surrounding us. Therefore we also have a continuous development of accessories. To the right you will find the most common and likely to be of your interest.

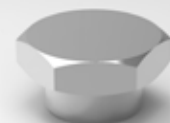
We strive to always be up to date with our product program and even though we are pioneering the market of glassware washers with the IQ series, we are still designing our accessories to be compatible with existing holders and spikes. If in any doubt, please do not hesitate to seek out counseling and contact our experts at KEN Life Science.



1



2

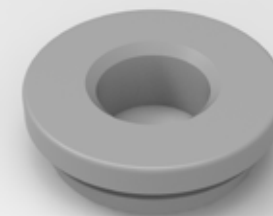


3



1: Plug for closing unused injector unit positions. ref. 2901020
2: Plug for closing unused threaded connections on units. ref. 8300091
3: Height adjustment spring for glassware supports. ref. 2900563

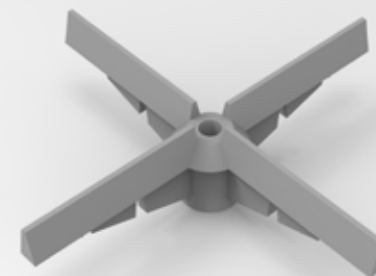
4



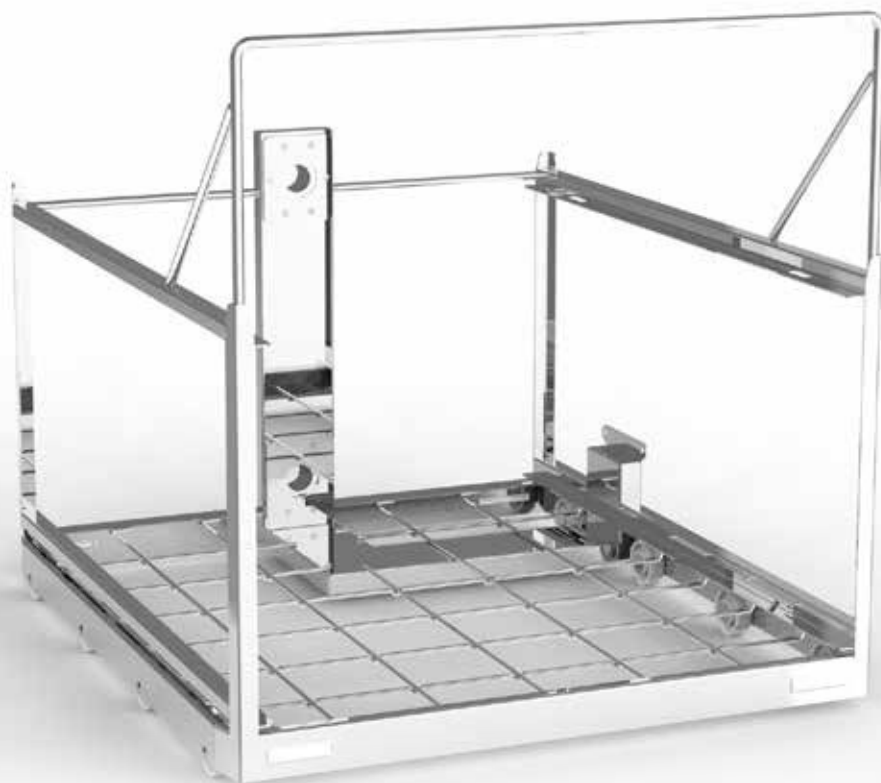
5



6



4: Grommet for connecting injector units on modules. ref. 2900811
5: Nozzle tip: 5 mm. ref. 8300109. 6 mm. ref. 8300110. 8 mm. ref. 8300111.
6: Glassware support for Ø4 injectors. ref. 7608938



BASE GLASSWARE RACK

Up to 2 levels, excl. modules ref. 2928698

The base glassware rack is designed to wash in 2 levels. Both levels has internal washing and drying. The shelves can be equipped with modules, distributors and injectors that you will find on the next pages. Every injector is connected not only to the internal water pump system for washing but also to the hot air blower motor, so every piece of glassware or equipment will be washed and dried as well from the inside as the outside.



IQ4 Rack. 2 level. ref. 2928604



IQ4 Flexible rack. 3 level. ref. 2928464

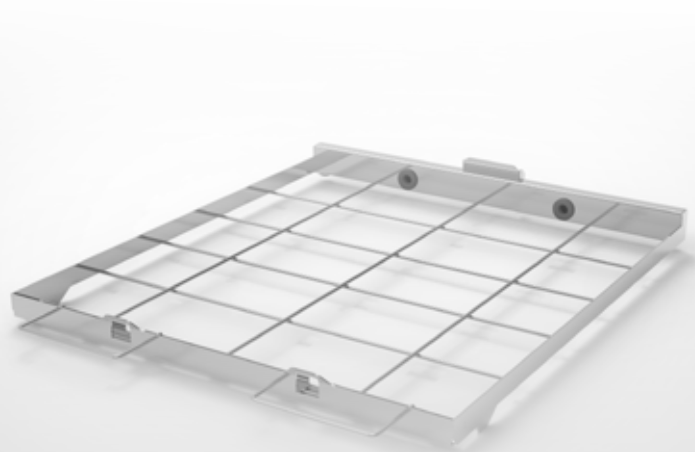
IQ4 LOADING RACKS

The Loading rack for KEN IQ4 LAB is designed in stainless steel. It is fitted with a top load indicator, so that the glassware is not damaged when it is pushed into the washing chamber. It is aligned with 8 wheels that ensures a smooth, silent and safe transportation in and out of the washing chamber.

IQ4 MODULES FOR BASE RACK

The modules for base rack are designed for the general or specific need. The idea of using modules for base rack is to avoid heavy lifting and thus ensure the best possible ergonomic work environment for the user. The module system also creates a great flexibility in terms of changing to a different load of goods. Furthermore the module system ensures that you can easily adapt to the future if you should have a change in the laboratory routine.

The pipette module is designed to be placed in the lowest position. This is due to the long pipettes that demands a lot of height. All the other modules can be placed in any position that suits the using staff best.



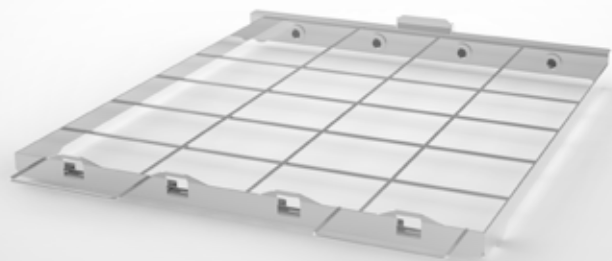
**MODULE
2 DISTRIBUTORS**

Glassware module for
2 injector units. Unit position
spread: 205 mm.
ref. 2928348



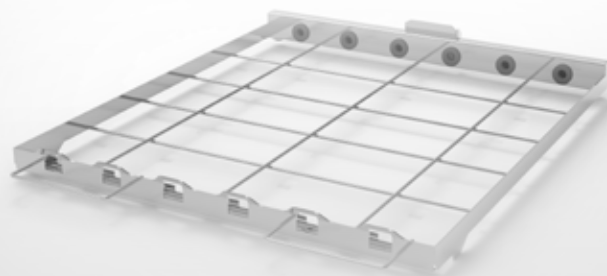
**MODULE
3 DISTRIBUTORS**

Glassware module for
3 injector units. Unit position
spread: 160 mm.
ref. 2928347



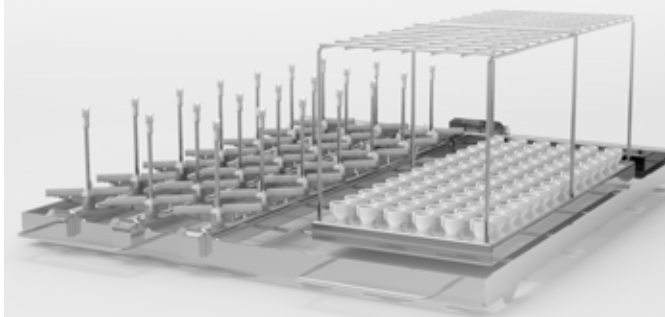
**MODULE
4 DISTRIBUTORS**

Glassware module for
4 injector units. Unit position
spread: 115 mm.
ref. 2928345



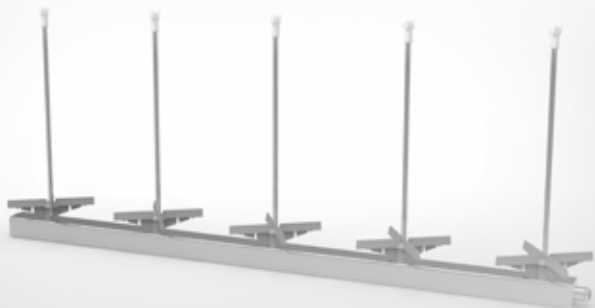
**MODULE
6 DISTRIBUTORS**

Glassware module for
6 injector units. Unit position
spread: 75 mm.
ref. 2928344



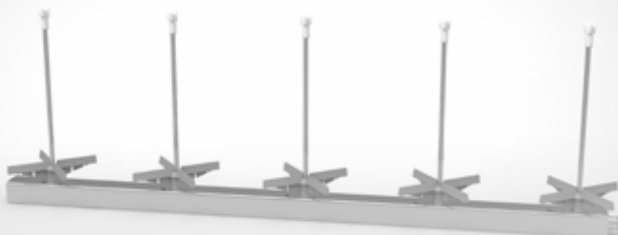
**MODULE
PIPETTES 84 PCS**

Glassware module for pipettes
(84 pcs.) + 3 injector units. Pipette
length min. 160 mm., max. 630 mm.
Unit position spread: 75 mm.
ref. 2928346



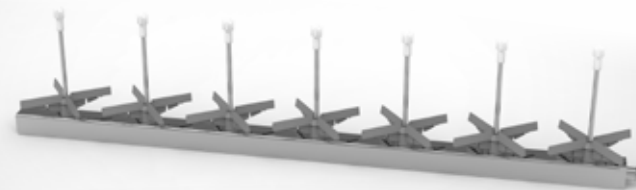
DISTRIBUTOR UNIT
5 x 200 mm. fixed injectors

Distributor unit with 5 x 200 mm.
fixed injectors. Injector position
spread: 115 mm.
ref. 2928360



DISTRIBUTOR UNIT
5 x 160 mm. fixed injectors

Distributor unit with 5 x 160 mm.
fixed injectors. Injector position
spread: 115 mm.
ref. 2928356



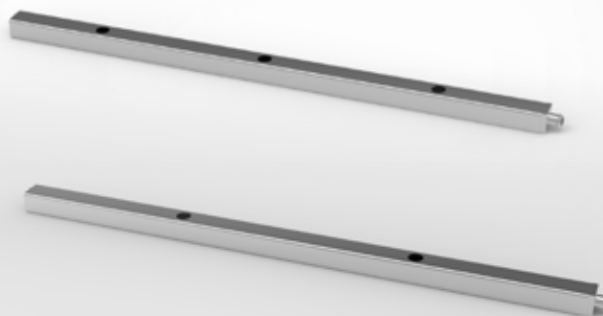
DISTRIBUTOR UNIT
7 x 100 mm. fixed injectors

Distributor unit with 7 x 100 mm.
fixed injectors. Injector position
spread: 75 mm.
ref. 2928355



DISTRIBUTOR UNIT
7 x 160 mm. fixed injectors

ref. 2928618



DISTRIBUTOR UNIT
2 or 3 x threaded connections

Distributor unit (excl. injectors):
2 x threaded connections.
Spread: 215 mm. ref. 2928359.
3 x threaded connections
Spread: 165 mm. ref. 2928358

IQ4 DISTRIBUTORS

The distributors are designed to give optimum flexibility. It comes in two types. Either with fixed spikes or with threaded connections for holders. This gives the possibility to optimize the flexibility. The rack or module can be equipped with both large systems for large volume flasks and at the same time have other distributors with a lot of spikes for small glassware.

The flexibility makes the most obvious appearance when you need to adapt for a different lot of goods. Unlike other racks you only change or apply one or maybe two distributors and your interior rack design changes completely. This procedure is easily done and without heavy lifting of any kind. Furthermore the laboratory saves a lot of storage space, as the rack design is so flexible. Thus you only need one rack and a few extra distributors to be able to accommodate a great variety of laboratory glassware and other equipment.

IQ4 SUPPORT FOR OTHER ACCESSORIES

The jet spikes from KEN HYGIENE SYSTEMS are always delivered with nozzles. These nozzles serve several purposes. Among other purposes it serves to ensure that the water spreads correctly. Due to continued testing our R&D has developed a new nozzle that performs the perfect spread of water and also contributes with a support of mechanical power to the spray of water that contributes to the best cleaning result.

The nozzle also helps protect the glassware from damage. The spikes are made of stainless steel and the nozzle then shields the glassware from the steel. The nozzle is also designed in a way that creates space between the spike and the glass.



NOZZLE

Nozzle for Ø4 injectors (threaded).
ref. 2900897



NOZZLE

Nozzle for pipettes.
ref. 2900913



JET SPIKES Ø5

Jet spikes Ø5 x 200 mm. for threaded units. Nozzle (tip) Ø8. ref. 8300105



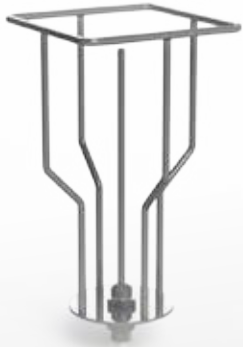
JET SPIKES Ø6

Jet spikes Ø6 x 270 mm. for threaded units. Nozzle (tip) Ø10. ref. 8300106



JET SPIKES Ø8

Jet spikes Ø8 x 360 mm for threaded units. Nozzle (tip) Ø13. ref. 8300107



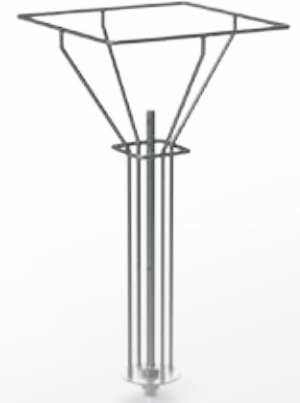
SUPPORT FOR FLASKS
500-1.000 ml.

Glassware adapter for threaded units. For e.g. Erlenmeyer 1.000 ml., Blue Cap 500-1.000 ml.
ref. 8300305



SUPPORT FOR FLASKS
5.000-10.000 ml.

Glassware adapter for threaded units. For large flasks 5.000 ml. - 10.000 ml.
ref. 8300310



SUPPORT FOR FLASKS
5.000 ml.

Glassware adapter for threaded units. For volumetric flasks 5.000 ml.
ref. 8300311



SUPPORT FOR FLASKS
500-2.000 ml.

Glassware adapter for threaded
For volumetric flasks 500 ml. -
2.000 ml. units.
ref. 8300312



SUPPORT FOR FLASKS
2.000-5.000 ml.

Glassware adapter for threaded For
Erlenmeyer 2.000 - 5.0000 ml.
ref. 8300313

IQ4 SUPPORT FOR FLASKS

If there is no space in between the glass and the spike there is a risk of clogging the spike. The design of the KEN Nozzle eliminates that risk.

KEN HYGIENE SYSTEMS has for several decades designed holders for laboratory glassware. This has been designed taking effectivity, safety and flexibility into account. The holder systems are fitted with the threaded connection to the threaded distributors. The new system for the IQ series is designed with the same threaded piece as our previous models, which means that your existing KEN holders can be placed directly in the new IQ machines. This is also the case with customized holder systems from KEN HYGIENE SYSTEMS .



IQ4 - OTHER ACCESSORIES

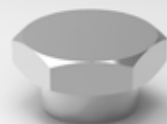
KEN is always developing and adapting to the world surrounding us. Therefore we also have a continuous development of accessories. To the right you will find the most common and likely to be of your interest.

We strive to always be up to date with our product program and even though we are pioneering the market of glassware washers with the IQ series, we are still designing our accessories to be compatible with existing holders and spikes. If in any doubt, please do not hesitate to seek out counseling and contact our experts at KEN Life Science.

1



2



3



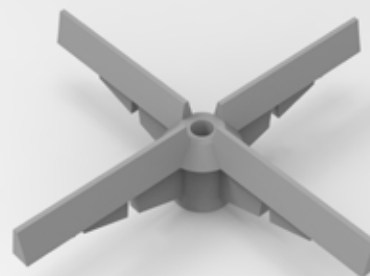
4



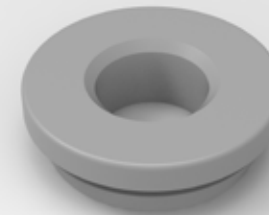
5



6



7



8



9



- 1: Plug for closing unused injector unit positions. ref. 2901020
- 2: Plug for closing unused threaded connections on units. ref. 8300091
- 3: Height adjustment spring for glassware supports. ref. 2900563

- 4: Cold touch handle for racks. ref. 2928193
- 5: Hook for loading & unloading racks from machine ref. 2908556
- 6: Glassware support for Ø4 injectors. ref. 7608938

- 7: Grommet for connecting injector units on modules. ref. 2900811
- 8: Nozzle tip: 5 mm. ref. 8300109. 6 mm. ref. 8300110. 8 mm. ref. 8300111.
- 9: Washing arm for rack. ref. 2928732



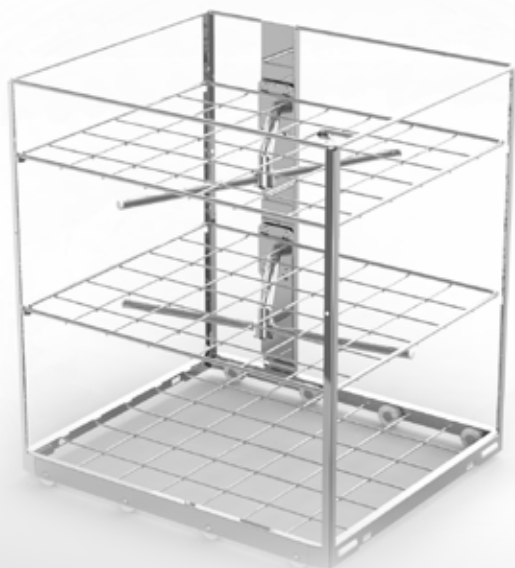
VIALS RACK
5 levels, for cleaning whole boxes of
laboratory vials. ref. 2908699



BASE GLASSWARE RACK
Up to 3 levels, excl. modules
ref. 2908343



RACK FOR BOTTLES
125 ml./250 ml.
ref. 2908362/2908361



FLEXIBLE RACK
for washing in 3 levels
ref. 2908464



FLEXIBLE RACK
for washing in 4 levels
ref. 2908169



FLEXIBLE RACK
for washing in 5 levels
ref. 2908161

A person wearing a white lab coat, a surgical mask, and safety glasses is working in a laboratory. They are holding a piece of glassware, possibly a test tube or a small vial, and are looking down at it. The background is slightly blurred, showing other laboratory equipment and a clean, professional environment. The entire image has a blue tint.

IQ5 LOADING RACKS

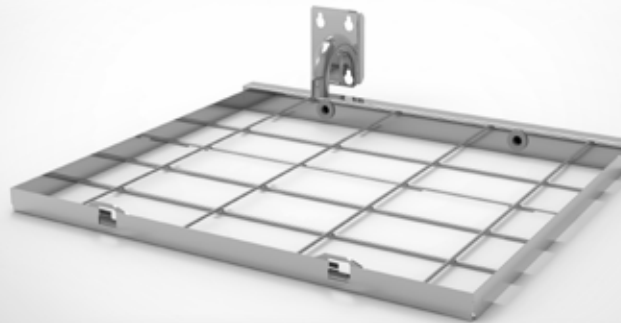
The Loading rack for KEN IQ5 LAB is designed in stainless steel. It is fitted with a top load indicator, so that the glassware is not damaged when it is pushed into the washing chamber. It is aligned with 8 wheels that ensures a smooth, silent and safe transportation in and out of the washing chamber.

It is designed to wash in up to 3 levels in 4 different positions. All levels have internal washing and drying. The shelves can be equipped with modules, distributors and injectors that you will find on the next pages. Every injector is connected not only to the internal water pump system for washing but also to the hot air blower motor, so every piece of glassware or equipment will be washed and dried as well from the inside as the outside.

IQ5 MODULES FOR BASE RACK

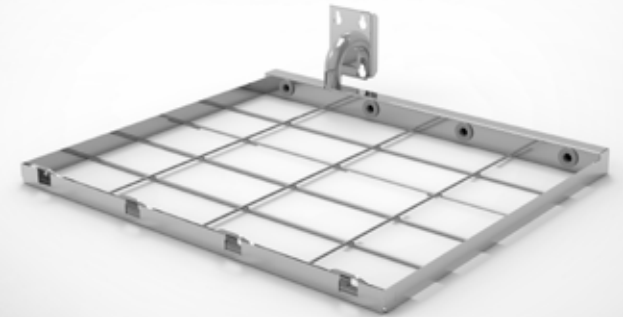
The modules for base rack are designed for the general or specific need. The idea of using modules for base rack is to avoid heavy lifting and thus ensure the best possible ergonomic work environment for the user. The module system also creates a great flexibility in terms of changing to a different load of goods. Furthermore the module system ensures that you can easily adapt to the future if you should have a change in the laboratory routine.

The pipette module is designed to be placed in the lowest position. This is due to the long pipettes that demands a lot of height. All the other modules can be placed in any position that suits the using staff best.



**MODULE
2 DISTRIBUTORS**

Glassware module for
2 injector units. Unit position
spread: 270 mm.
ref. 2908348



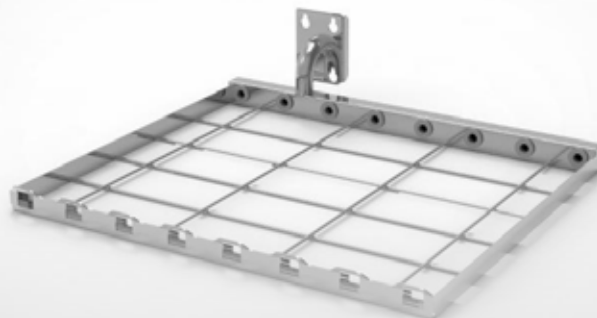
**MODULE
4 DISTRIBUTORS**

Glassware module for
4 injector units. Unit position
spread: 150 mm.
ref. 2908347



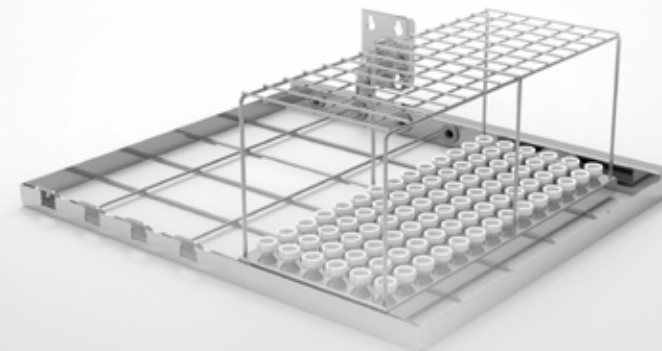
MODULE 5 DISTRIBUTORS

Glassware module for
5 injector units. Unit position
spread: 120 mm.
ref. 2908345



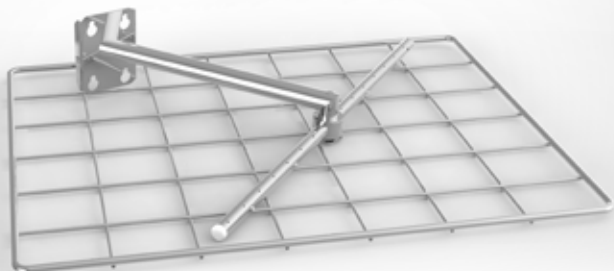
MODULE 8 DISTRIBUTORS

Glassware module for
8 injector units. Unit position
spread: 70 mm.
ref. 2908344



MODULE PIPETTES 84 PCS

Glassware module for pipettes (84
pcs.) + 4 injector units. Pipette length
min. 160 mm, max. 630 mm.
Unit position spread: 70 mm.
ref. 2908346



GLASSWARE UNIT

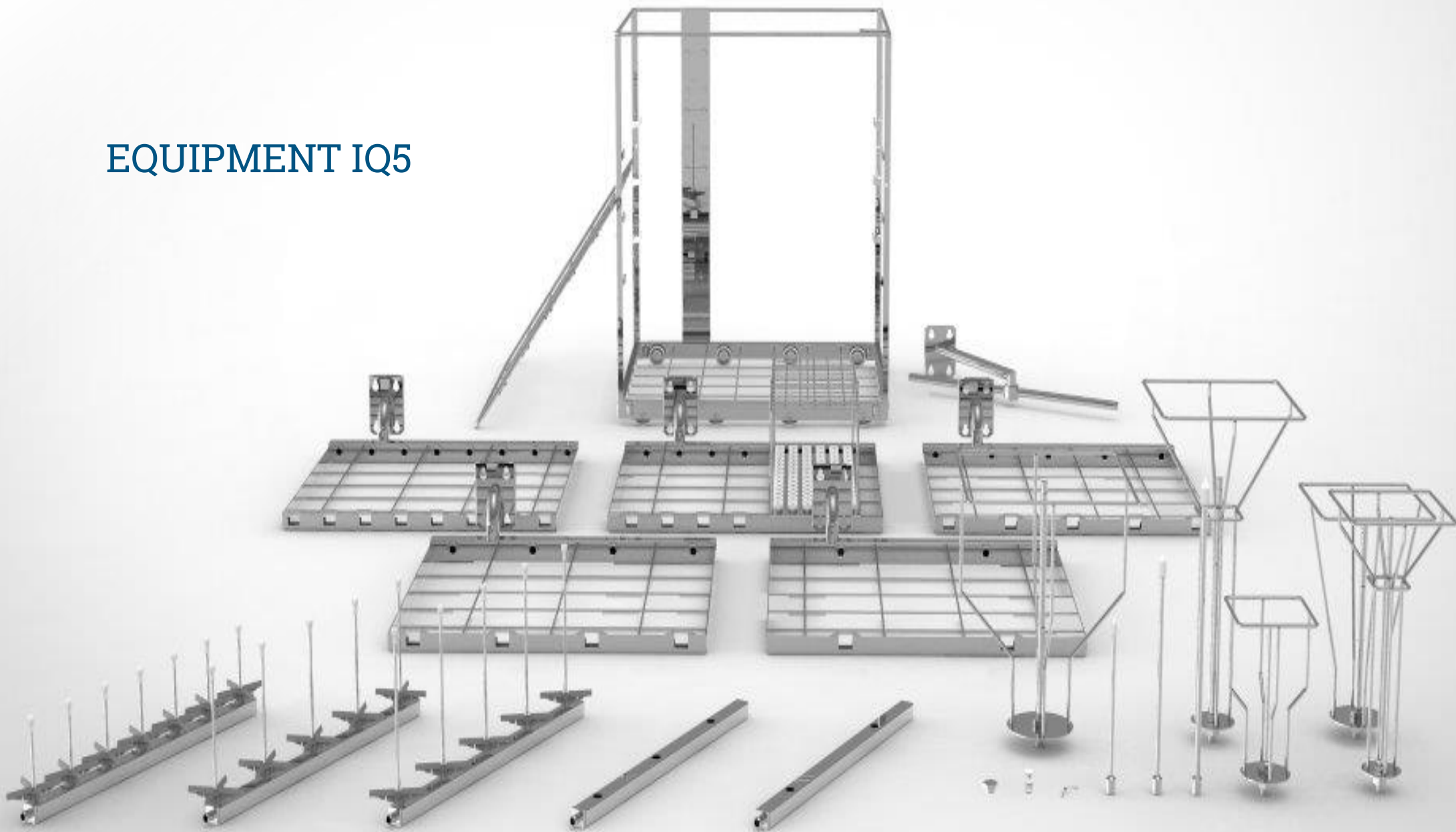
Level shelf incl. spray arm. For cleaning miscellaneous items on upper levels.
ref. 2908456

IQ5 MODULES FOR BASE RACK

The modules for base rack are designed for the general or specific need. The idea of using modules for base rack is to avoid heavy lifting and thus ensure the best possible ergonomic work environment for the user. The module system also creates a great flexibility in terms of changing to a different load of goods. Furthermore the module system ensures that you can easily adapt to the future if you should have a change in the laboratory routine.

The pipette module is designed to be placed in the lowest position. This is due to the long pipettes that demands a lot of height. All the other modules can be placed in any position that suits the using staff best.

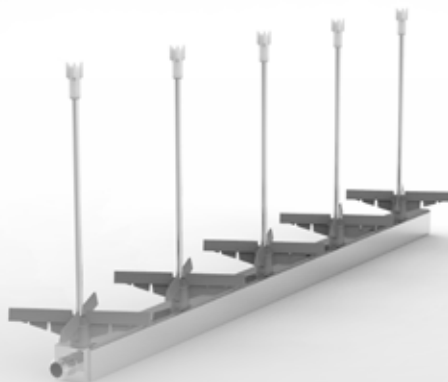
EQUIPMENT IQ5





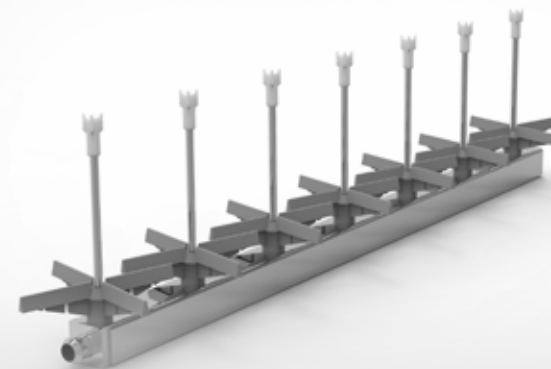
DISTRIBUTOR UNIT
5 x 200 mm. fixed injectors

Distributor unit with 5 x 200 mm.
fixed injectors. Injector position
spread: 100 mm.
ref. 2908637



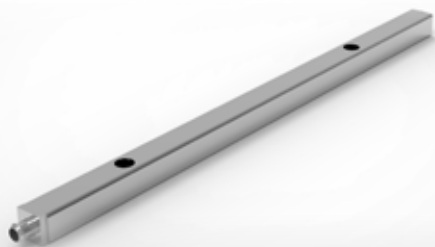
DISTRIBUTOR UNIT
5 x 160 mm. fixed injectors

Distributor unit with 5 x 160 mm.
fixed injectors. Injector position
spread: 100 mm.
ref. 2908635



DISTRIBUTOR UNIT
7 x 100 mm. fixed injectors

Distributor unit with 7 x 100 mm.
fixed injectors. Injector position
spread: 68 mm.
ref. 2908634



DISTRIBUTOR UNIT
2 x threaded connections

Distributor unit with 2 x threaded connections (excl. injectors).
Injector position spread: 255 mm.
ref. 2908359



DISTRIBUTOR UNIT
3 x threaded connections

Distributor unit with 3 x threaded connections (excl. injectors).
Injector position spread: 150 mm.
ref. 2908358

IQ5 DISTRIBUTORS

The distributors are designed to give optimum flexibility. It comes in two types. Either with fixed spikes or with threaded connections for holders. This gives the possibility to optimize the flexibility. The rack or module can be equipped with both large systems for large volume flasks and at the same time have other distributors with a lot of spikes for small glassware.

The flexibility makes the most obvious appearance when you need to adapt for a different lot of goods. Unlike other racks you only change or apply one or maybe two distributors and your interior rack design changes completely. This procedure is easily done and without heavy lifting of any kind. Furthermore the laboratory saves a lot of storage space, as the rack design is so flexible. Thus you only need one rack and a few extra distributors to be able to accommodate a great variety of laboratory glassware and other equipment.

IQ5 SUPPORT FOR OTHER ACCESSORIES

The jet spikes from KEN HYGIENE SYSTEMS are always delivered with nozzles. These nozzles serve several purposes. Among other purposes it serves to ensure that the water spreads correctly. Do to continuance testing our R&D has developed a new nozzle that performs the perfect spread of water and also contributes with a support of mechanical power to the spray of water that contributes to the best cleaning result.

The nozzle also helps protect the glassware to be damaged. The spikes are made of stainless steel and the nozzle then shields the glassware from the steel. The nozzle is also designed in a way that creates space between the spike and the glass.



NOZZLE

Nozzle for Ø4 injectors (threaded).
ref. 2900897



NOZZLE

Nozzle for pipettes.
ref. 2900913



JET SPIKES Ø5

Jet spikes Ø5 x 200 mm. for threaded units. Nozzle (tip) Ø8. ref. 8300105



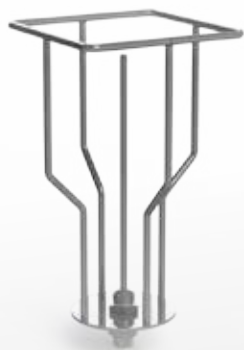
JET SPIKES Ø6

Jet spikes Ø6 x 270 mm. for threaded units. Nozzle (tip) Ø10. ref. 8300106



JET SPIKES Ø8

Jet spikes Ø8 x 360 mm. for threaded units. Nozzle (tip) Ø13. ref. 8300107



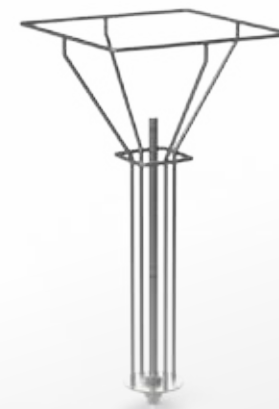
SUPPORT FOR FLASKS
500-1.000 ml

Support for flasks for threaded
units. For e.g. Erlenmeyer 1.000 ml,
Blue Cap 500-1.000 ml.
ref. 8300305



SUPPORT FOR FLASKS
5.000-10.000 ml.

Support for flasks for threaded
units. For large flasks 5.000 ml.
- 10.000 ml.
ref. 8300310



SUPPORT FOR FLASKS
5.000 ml.

Support for flasks for threaded
units. For volumetric flasks 5.000 ml.
ref. 8300311



SUPPORT FOR FLASKS
500-2.000 ml.

Support for flasks for threaded units. For volumetric flasks 500 ml. - 2.000 ml units.
ref. 8300312



SUPPORT FOR FLASKS
2.000-5.000 ml.

Support for flasks for threaded units
For Erlenmeyer 2.000 - 5.0000 ml.
ref. 8300313

IQ5 SUPPORT FOR FLASKS

If there is no space in between the glass and the spike there is a risk of clogging the spike. The design of the KEN Nozzle eliminates that risk.

KEN HYGIENE SYSTEMS has for several decades designed holders for laboratory glassware. This has been designed taking effectivity, safety and flexibility into account. The holder systems are fitted with the threaded connection to the threaded distributors. The new system for the IQ series is designed with the same threaded piece as our previous models, which means that your existing KEN holders can be placed directly in the new IQ machines. This is also the case with customized holder systems from KEN HYGIENE SYSTEMS .



IQ5 - OTHER ACCESSORIES

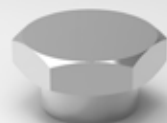
KEN is always developing and adapting to the world surrounding us. Therefore we also have a continuous development of accessories. To the right you will find the most common and lightly to be of your interest.

We strive to always be up to date with our product program and even though we are pioneering the market of glassware washers with the IQ series, we are still designing our accessories to be compatible with existing holders and spikes. If in any doubt, please do not hesitate to seek out counseling and contact our experts at KEN Life Science.

1



2



3



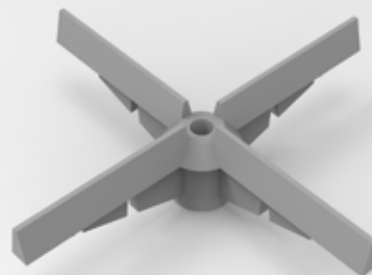
4



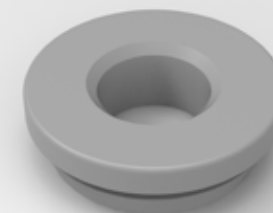
5



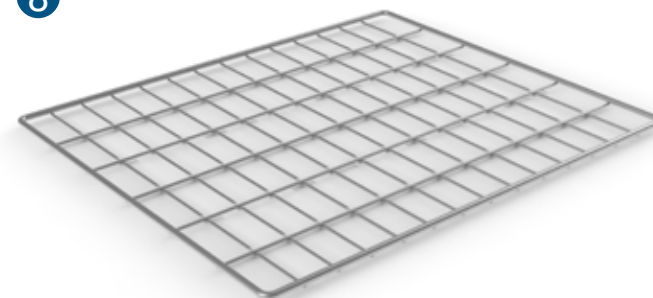
6



7



8



9



1: Plug for closing unused injector unit positions. ref. 2901020

2: Plug for closing unused threaded connections on units. ref. 8300091

3: Height adjustment spring for glassware supports. ref. 2900563

4: Cold touch handle for racks. ref. 2908193

5: Hook for loading & unloading racks from machine ref. 2908556

6: Glassware support for Ø4 injectors. ref. 7608938

7: Grommet for connecting injector units on modules. ref. 2900811

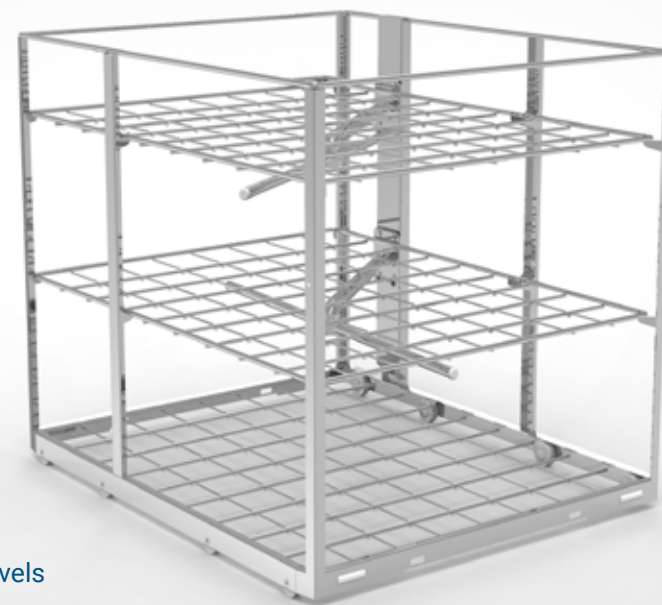
8: Replacement level-shelve for racks with tighter grid. ref. 2908469

9: Washing arm for rack. ref. 2908015



BASE GLASSWARE RACK

Base glassware rack, up to 3 levels, excl. modules
ref. 2918343



FLEXIBLE RACK

For washing in 3 levels
ref. 2918464



FLEXIBLE RACK

Flexible Rack for washing in 4 levels
ref. 2918169



FLEXIBLE RACK

Flexible Rack for washing in 5 levels
ref. 2918161



IQ6 LOADING RACKS

The Loading rack for KEN IQ6 LAB is designed in stainless steel. It is fitted with a top load indicator, so that the glassware is not damaged when it is pushed into the washing chamber. It is aligned with 8 wheels that ensures a smooth, silent and safe transportation in and out of the washing chamber.

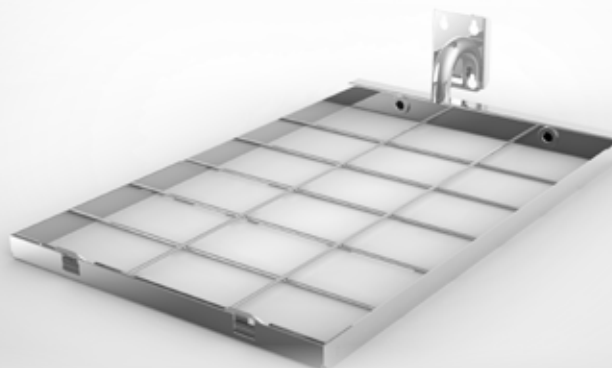
It is designed to wash up to 3 levels in 4 different positions. Each level is split in two parts which allows for washing in up to 4 levels. Both levels have internal washing and drying. The shelves can be equipped with modules, distributors and injectors that you will find on the next pages. Every injector is connected not only to the internal water pump system for washing but also to the hot air blower motor, so every piece of glassware or equipment will be washed and dried as well from the inside as the outside.

IQ6 MODULES FOR BASE RACK

The modules for base rack are designed for the general or specific need. The idea of using modules for base rack is to avoid heavy lifting and thus ensure the best possible ergonomic work environment for the user. The module system also creates a great flexibility in terms of changing to a different load of goods. Furthermore the module system ensures that you can easily adapt to the future if you should have a change in the laboratory routine.

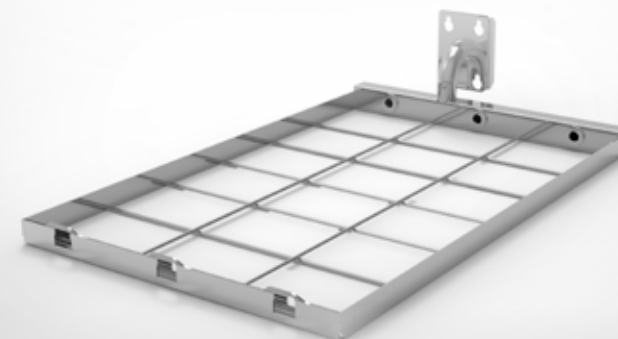
The pipette module is designed to be placed in the lowest position. This is due to the long pipettes that demands a lot of height. All the other modules can be placed in any position that suits the using staff best.

The modules for IQ6 is $\frac{1}{2}$ with of the rack. In this way one side of the rack can be equipped with 2 or 3 modules while the other side washes higher glassware that needs more space in the height. This allows you to use the same rack for all the different glassware in your laboratory. Thus the most flexible solution possible.



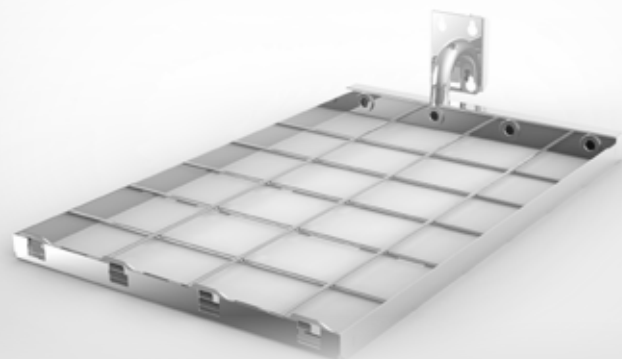
**MODULE
2 DISTRIBUTORS**

Glassware module for
2 injector units. Unit position
spread: 208 mm.
ref. 2918348



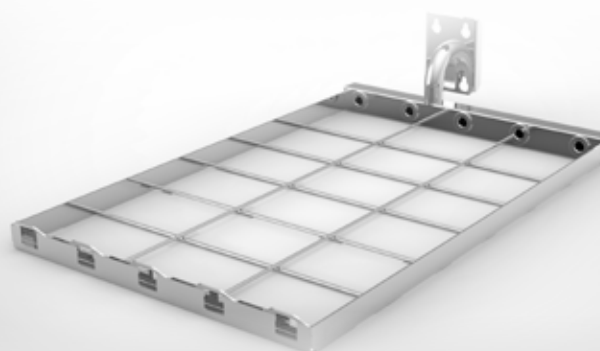
**MODULE
3 DISTRIBUTORS**

Glassware module for
3 injector units. Unit position
spread: 130 mm.
ref. 2918347



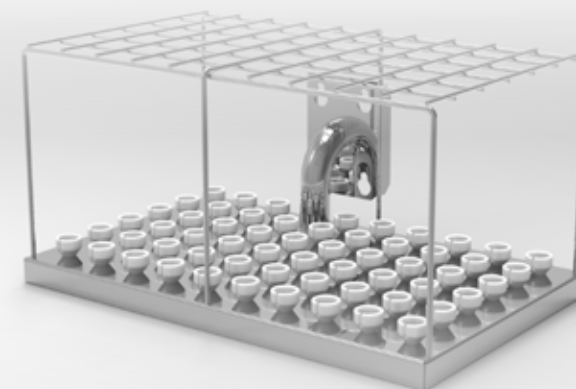
**MODULE
4 DISTRIBUTORS**

Glassware module for
4 injector units. Unit position
spread: 104 mm.
ref. 2918345



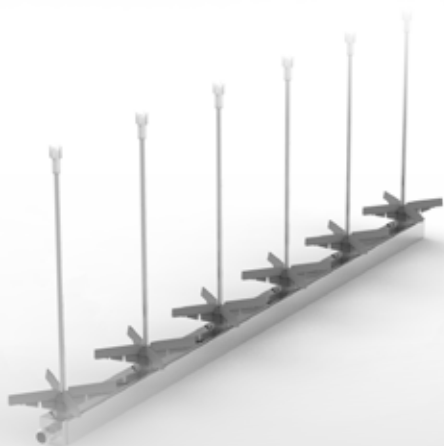
**MODULE
5 DISTRIBUTORS**

Glassware module for
5 injector units. Unit position
spread: 80 mm.
ref. 2918344



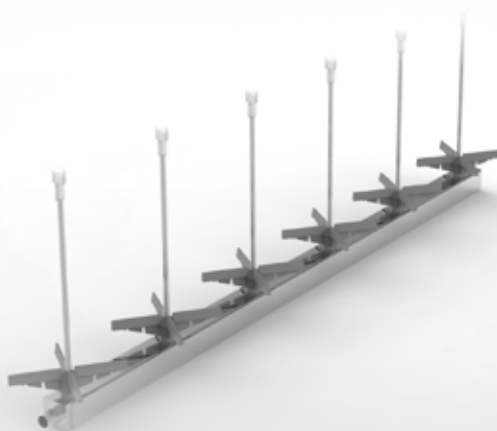
**MODULE
PIPETTES 59 PCS**

Glassware module for pipettes (59
pcs.). Pipette length min. 160 mm.,
max. 630 mm.
ref. 2918346



DISTRIBUTOR UNIT
6 x 200 mm. fixed injectors

Distributor unit with 6 x 200 mm.
fixed injectors. Injector position
spread: 105 mm.
ref. 2918637



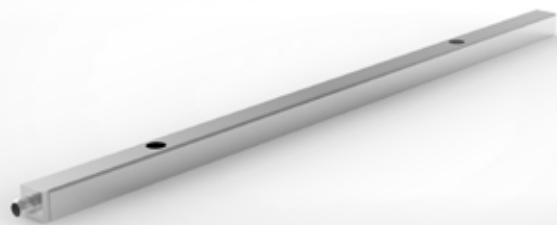
DISTRIBUTOR UNIT
6 x 160 mm. fixed injectors

Distributor unit with 6 x 160 mm.
fixed injectors. Injector position
spread: 105 mm.
ref. 2918635



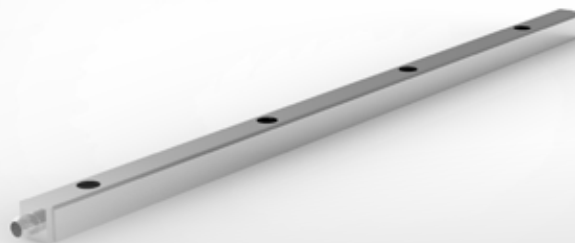
DISTRIBUTOR UNIT
7 x 100 mm. fixed injectors

Distributor unit with 7 x 100 mm.
fixed injectors. Injector position
spread: 81 mm.
ref. 2918634



DISTRIBUTOR UNIT
2 x threaded connections

Distributor unit with 2 x threaded connections (excl. injectors).
Injector position spread: 330 mm.
ref. 2918359



DISTRIBUTOR UNIT
4 x threaded connections

Distributor unit with 4 x threaded connections (excl. injectors).
Injector position spread: 150 mm.
ref. 2918358

IQ6 DISTRIBUTORS

The distributors are designed to give optimum flexibility. It comes in two types. Either with fixed spikes or with threaded connections for holders. This gives the possibility to optimize the flexibility. The rack or module can be equipped with both large systems for large volume flasks and at the same time have other distributors with a lot of spikes for small glassware.

The flexibility makes the most obvious appearance when you need to adapt for a different lot of goods. Unlike other racks you only change or apply one or maybe two distributors and your interior rack design changes completely. This procedure is easily done and without heavy lifting of any kind. Furthermore the laboratory saves a lot of storage space, as the rack design is so flexible. Thus you only need one rack and a few extra distributors to be able to accommodate a great variety of laboratory glassware and other equipment.

IQ6 SUPPORT FOR OTHER ACCESSORIES

The jet spikes from KEN HYGIENE SYSTEMS are always delivered with nozzles. These nozzles serve several purposes. Among other purposes it serves to ensure that the water spreads correctly. Do to continuance testing our R&D has developed a new nozzle that performs the perfect spread of water and also contributes with a support of mechanical power to the spray of water that contributes to the best cleaning result.

The nozzle also helps protect the glassware to be damaged. The spikes are made of stainless steel and the nozzle then shields the glassware from the steel. The nozzle is also designed in a way that creates space between the spike and the glass.



NOZZLE

Nozzle for Ø4 injectors (threaded).
ref. 2900897



NOZZLE

Nozzle for pipettes.
ref. 2900913



JET SPIKES Ø5

Jet spikes Ø5 x 200 mm. for threaded units. Nozzle (tip) Ø8. ref. 8300105



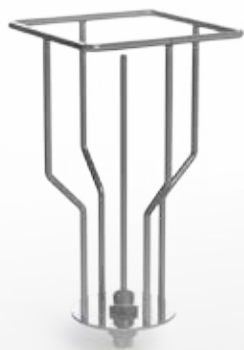
JET SPIKES Ø6

Jet spikes Ø6 x 270 mm. for threaded units. Nozzle (tip) Ø10. ref. 8300106



JET SPIKES Ø8

Jet spikes Ø8 x 360 mm. for threaded units. Nozzle (tip) Ø13. ref. 8300107



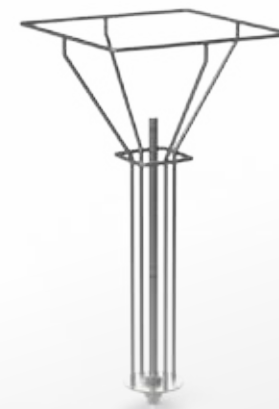
GLASSWARE ADAPTER
500-1.000 ml.

Glassware adapter for threaded units. For e.g. Erlenmeyer 1.000 ml., Blue Cap 500-1.000 ml.
ref. 8300305



GLASSWARE ADAPTER
5.000-10.000 ml.

Glassware adapter for threaded units. For large flasks 5.000 ml. - 10.000 ml.
ref. 8300310



GLASSWARE ADAPTER
5.000 ml.

Glassware adapter for threaded units. For volumetric flasks 5.000 ml.
ref. 8300311



GLASSWARE ADAPTER
500-2.000 ml.

Glassware adapter for threaded
For volumetric flasks 500 ml. -
2.000 ml. units.
ref. 8300312



GLASSWARE ADAPTER
2.000-5.000 ml

Glassware adapter for threaded For
Erlenmeyer 2.000 - 5.0000 ml.
ref. 8300313

IQ6 SUPPORT FOR FLASKS

If there is no space in between the glass and the spike there is a risk of clogging the spike. The design of the KEN Nozzle eliminates that risk.

KEN HYGIENE SYSTEMS has for several decades designed holders for laboratory glassware. This has been designed taking effectivity, safety and flexibility into account. The holder systems are fitted with the threaded connection to the threaded distributors. The new system for the IQ series is designed with the same threaded piece as our previous models, which means that your existing KEN holders can be placed directly in the new IQ machines. This is also the case with customized holder systems from KEN HYGIENE SYSTEMS .



IQ6 - OTHER ACCESSORIES

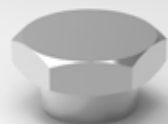
KEN is always developing and adapting to the world surrounding us. Therefore we also have a continuous development of accessories. To the right you will find the most common and lightly to be of your interest.

We strive to always be up to date with our product program and even though we are pioneering the market of glassware washers with the IQ series, we are still designing our accessories to be compatible with existing holders and spikes. If in any doubt, please do not hesitate to seek out counseling and contact our experts at KEN Life Science.

1



2



3



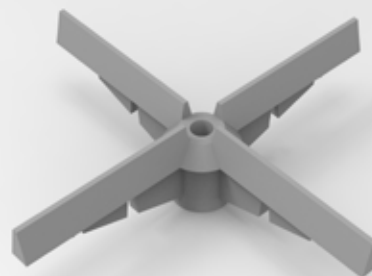
4



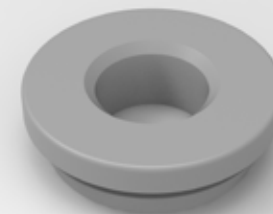
5



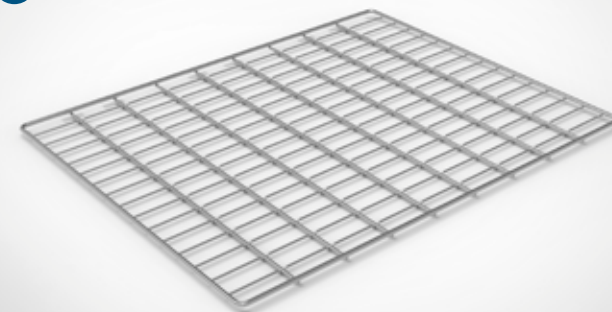
6



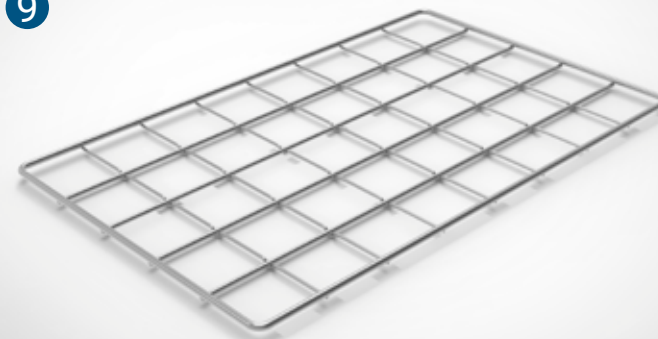
7



8



9



- 1: Plug for closing unused injector unit positions. ref. 2901020
- 2: Plug for closing unused threaded connections on units. ref. 8300091
- 3: Height adjustment spring for glassware supports. ref. 2900563

- 4: Cold touch handle for racks. ref. 2901015
- 5: Hook for loading & unloading racks from machine ref. 2908556
- 6: Glassware support for Ø4 injectors. ref. 7608938

- 7: Grommet for connecting injector units on modules. ref. 2900811
- 8: Replacement level-shelve for racks with tighter grid. ref. 2918469
- 9: Rack shelf for a half level. For different loading heights on each rack half. ref. 7609658



HEIGHT ADJUSTABLE
TROLLEY

Height adjustable Trolley IQ5 and IQ6.
IQ5: ref. 7610257
IQ6: ref. 7609529



MANUAL TROLLEY

Manual Trolley IQ5.
ref. 2908117



MANUAL TROLLEY

Manual Trolley IQ6.
ref. 2918117

TROLLEYS FOR EVERY DEMAND

Manual loading trolley - Height adjustable trolley

KEN HYGIENE SYSTEMS has a very wide range of logistics solutions. It extends from the simple to the fully automated logistics solution, with robotics and related buffer stations, monitoring screens and terminal tablets.

The manual transport trolley. This is connected to the machine in front of the door and locks itself firmly to the machine. It can be loosened and released with a single hand and is very user-friendly. .

The electronically adjustable transport trolley. This works more or less the same way as the manual trolley, but can be adjusted in height. It has several pre-programmed fix heights or can be easily and quickly programmed on site.

The height adjustment is electronic and highly ergonomic.



TECHNICAL INFORMATION

Life Science dimensional sketches.
Scan the QR code.

KEN HYGIENE SYSTEMS A/S

Bøgebjergvej 60
DK-5672 Broby



www.rieger-iv.at

Wir sind für Sie da:
E-Mail: office@rieger-iv.at
Telefon: +43(1) 728 00 52
Fax: +43(1) 728 69 16
Rustenschacher Allee 10
1020 Wien, Austria