

VERTRIEB DURCH:



**Ihr Anbieter für Geräte im Bereich
Labor, Mikrobiologie und Industrie.**

Wir sind für Sie da:

E-Mail: office@rieger-iv.at

Telefon: +43(1) 728 00 52

Fax: +43(1) 728 69 16

Rustenschacher Allee 10, 1020 Wien, Austria

www.rieger-iv.at



Continuous Tubular Centrifuge

J1250

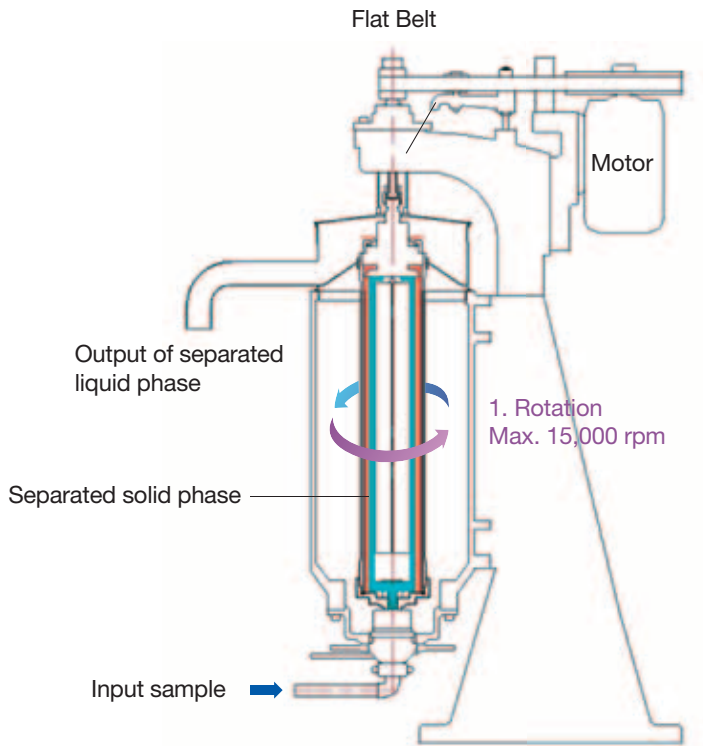
- Tubular type industrial centrifuge for continuous treatment
- Two phase (liquid/solid) separation
- High recovery of sludge (cake type)
- Water jacketed cooling system (optional)
- Up to two pumps
- Easy loading and unloading with safety 4 door-racks
- Intuitive touch-screen control panel
- Robust design and shock proof operation



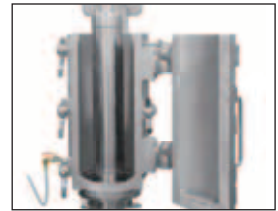
Harvesting Process



Mechanical Structure



Bowl



Door



Injection Pump

Peristaltic Injection Pump
or Diaphragm Pump



Controller

Applications

Pharmaceutical areas

Collection of pharmaceutical intermediates, herb extracts, plant fibers and chlorella

Food processing areas

Soy bean, fat, vegetable oil, starches, grains, gelatin, amino acids, soy sauce, reducing fat in milk

Chemistry industry areas

Cleaning and collection of ink, paints, ammonia, barium, aluminum, zinc, activated charcoal and stainings

Waste water treatment

Cleaning on straining waste water, leather waste water, petroleum tank sludge, waste oil

The other fields

Milk fat processing, cosmetics, cod-liver oil, yeast processing, and many other separation of solution and collection of solids

Technical Specifications

| | Tubular Continuous Centrifuge, J1250 |
|------------------------|--|
| Speed | 15,000 RPM / 15,800 xg |
| Max. Capacity | 2,200 L/ hr when the density is 1 g/ml |
| Bowl Capacity | 9 L |
| Bowl Dimension (inner) | 125 (Ø) x 735 (L) mm |
| Bowl Material / Weight | SUS / 27 kg |
| Display & Control | 10" Touch Screen LCD, Stand-alone |
| Parameters Displayed | Speed in RPM and RCF, Time, Program, Pump and Operational Status |
| Time Control | 99 hr 59 min 59 sec or Continuous |
| Motor | 3.7 kW, 50/60 Hz |
| Cooling Unit | Optional (Factory Installation) |
| Door Opening | Front |
| Case Material | Cast Iron (Optional SUS) |
| Power Consumption | 4.7 kW |
| Power Requirement | 220V or 380V 3 Phase |
| Dimension of Main Body | 840(W) x 450(D) x 1600(H) mm |
| Weight | Complete System : approx. 713 kg (Main body 564 kg, Bowl 27kg, Controller 52kg, Accessories incl. a Pump 70 kg) |

Ordering Information

| Cat. No. | Description |
|-----------------|--|
| CC1102 | J1250 Tubular Continuous Centrifuge, Main Body incl. A H-beam Base, In/Out Tubes and Operating Tools |
| CC2001 | Bowl (SUS) with a Trolley and One Set of Harvesting Teflon Sheets (3 ea/set) |
| CC3001 | Controller with 10" LCD and Inverter for 220V, Stand-alone |
| CC3002 | Controller with 10" LCD and Inverter for 380V, Stand-alone |
| CC4001 | Peristaltic Tube Pump incl. a Pump Stand (WT600-2J) |
| CC4002 | Diaphragm Pump for Highly Viscous Sample (KD73L) incl. a Pump Stand |
| CC6001 | Harvesting Sheet of Teflon (395 x 735 mm), 3 ea/set |