

Model 2101 Controlled Rate Freezer



- Laptop controller using Windows based operating system.
- Unlimited programming capability.
- Multi-color graphing of sample, chamber and program temperature.
- Temperature set points by sample or chamber.
- Programs and freeze data saved to hard drive or disc.
- Password protected software.
- Searchable database for freeze run history.
- Freeze run graphs and data available via any standard USB printer.
- 30 data fields available for each freeze run.
- Continuous digital and graph display for time and temperature during operation.
- Manual overrides for all operating functions.
- Temperature range +50 °C to -180 °C.
- Freezing rates of 0.01° to 99.9° per minute.
- Program temperature hold of 1 second to 99 hours.
- Six pre-set easy to run freeze programs.



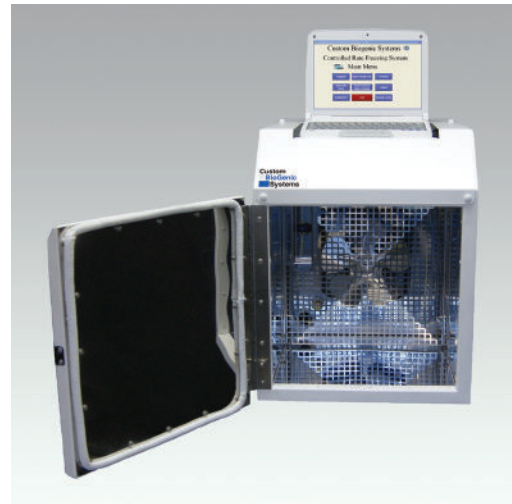
Standard system consists of:

- Laptop controller with 2100 software
- Freezing chamber
- Choice of sample rack
- 4 ft. transfer line

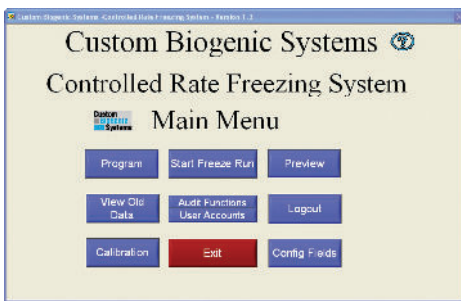
Features / Specifications

Chamber Specifications

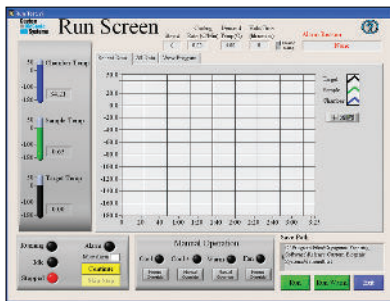
- Power requirements:
120 volt, 50/60 Hz, 10 amp, or
230 volt, 50/60 Hz, 10 amp
- Outside dimensions:
Depth: 25 1/2" (648 mm)(including vent)
Height: 29 1/4" (743 mm)(including computer)
Width: 19 1/16" (484 mm)
(Including Hose Connection)
- Inside dimensions:
Depth: 9 9/16" (243 mm)
Height: 13 3/4" (349 mm)
Width: 14" (356 mm)
28 Liters



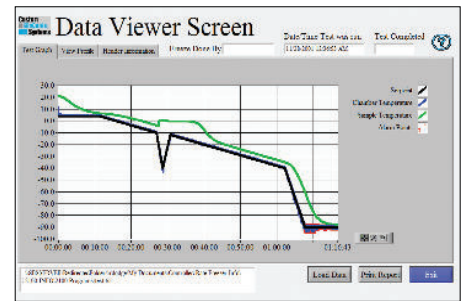
Examples of some operating and programming screens



Main Menu screen for selection of all system functions.



Run screen provides all details of actual freeze runs during operation, plus all manual override controls.



Data view screen showing "Heat of Fusion"

Accessories

